

PART OF S.E. 1/4
SECTION 32 T.7N.,R.2W., S.L.B.&M.

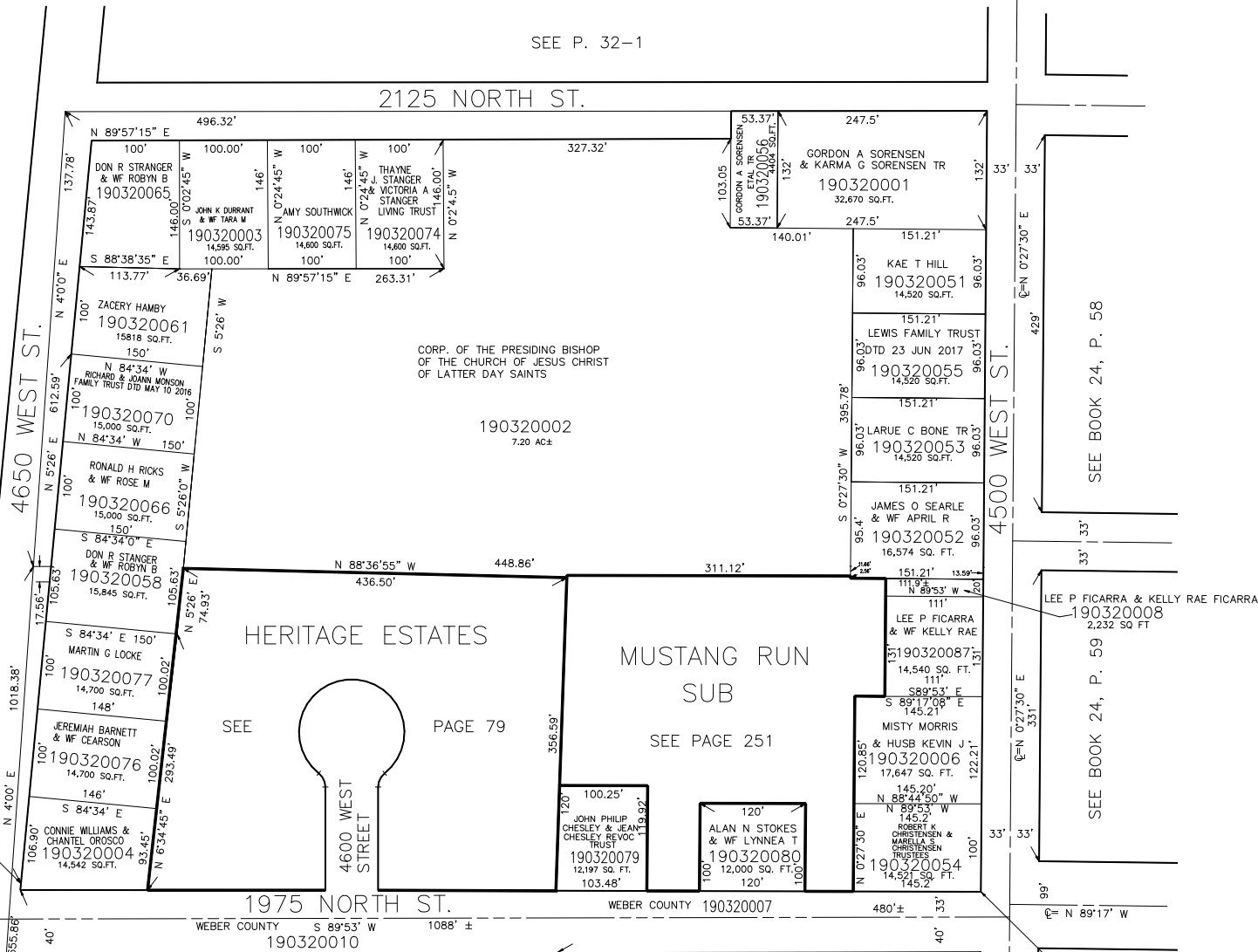
IN PLAIN CITY
SCALE 1" = 100'

TAXING UNIT: 21

PREFIX : 19-032

SEE P. 32-1

2125 NORTH ST.



SEE P. 33

4650 WEST ST.

CORP. OF THE PRESIDING BISHOP
OF THE CHURCH OF JESUS CHRIST
OF LATTER DAY SAINTS

190320002
7.20 AC±

HERITAGE ESTATES

MUSTANG RUN
SUB

SEE PAGE 79

SEE PAGE 251

SEE BOOK 24, P. 58

LEE P FICARRA & KELLY RAE FICARRA
2,232 SQ FT
190320008

SEE BOOK 24, P. 59

W.1320' N.6369'
E.4.18FT FROM THE S.E. COR.
OF S.E.1/4 OF SEC.32.

SEE P. 32

1775 NORTH ST.

WEBER COUNTY 190320010
S 89°53' W 1088' ±

S.W. COR. OF S.E.1/4 OF SEC.32, T.7N., R.2W.